



NEWS RELEASE

December 18, 2020

Tosoh Silica Develops Nipsil® WE Series of Silica for Waterborne Paint Matting Agent

Tosoh Silica presents its WE series of Nipsil silica, a fine particle type silica with excellent dispersibility for use in matting agents for waterborne paints.

Our Nipsil specialty silica is widely used as a matting agent for paints, but in waterborne paints, especially in O/W emulsion paints, silica particles aggregate and are unable to sufficiently disperse. Moreover, the aggregate silica remain in the coating film.

To counter this issue, Tosoh Silica developed its WE series using unique technology that controls the wettability between silica and waterborne paint, enabling uniform dispersion in a short time. By blending the WE series, a smooth matte coating film can be obtained.

We will start sample work in earnest.

WE Series Summary

< Characteristics >

- WE-1011 (Fine particle type) Excellent smoothness and transparency in high-grade coatings for plastics, woodworking, and interior building materials.
- WE-170 (Medium particle type) Excellent matte performance in thick film coatings for metals and building materials.

< Physical properties*1 >

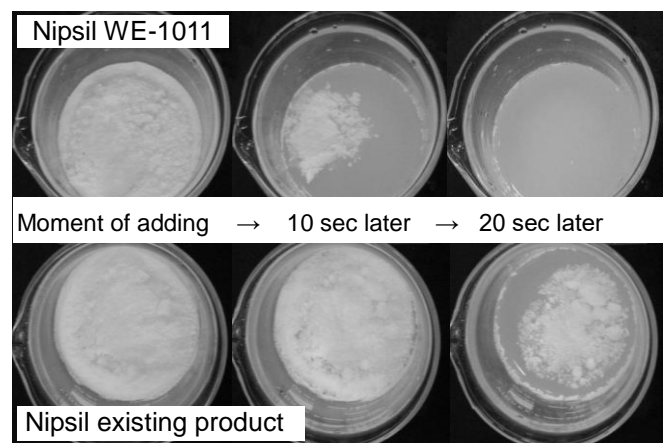
Properties	Unit	WE-1011	WE-170
Average particle size*2	μm	4.2	6.7
Oil absorption	mL/100g	350	340
Degree of dispersion*3	μm	20	25

*1 Not guaranteed values

*2 Laser diffraction method D₅₀

*3 JIS K 5600-2-5

< Water Wettability >



* Please refer to [our technical data](#) for more information.

Nipsil is the registered trademark of Tosoh Silica Corporation.